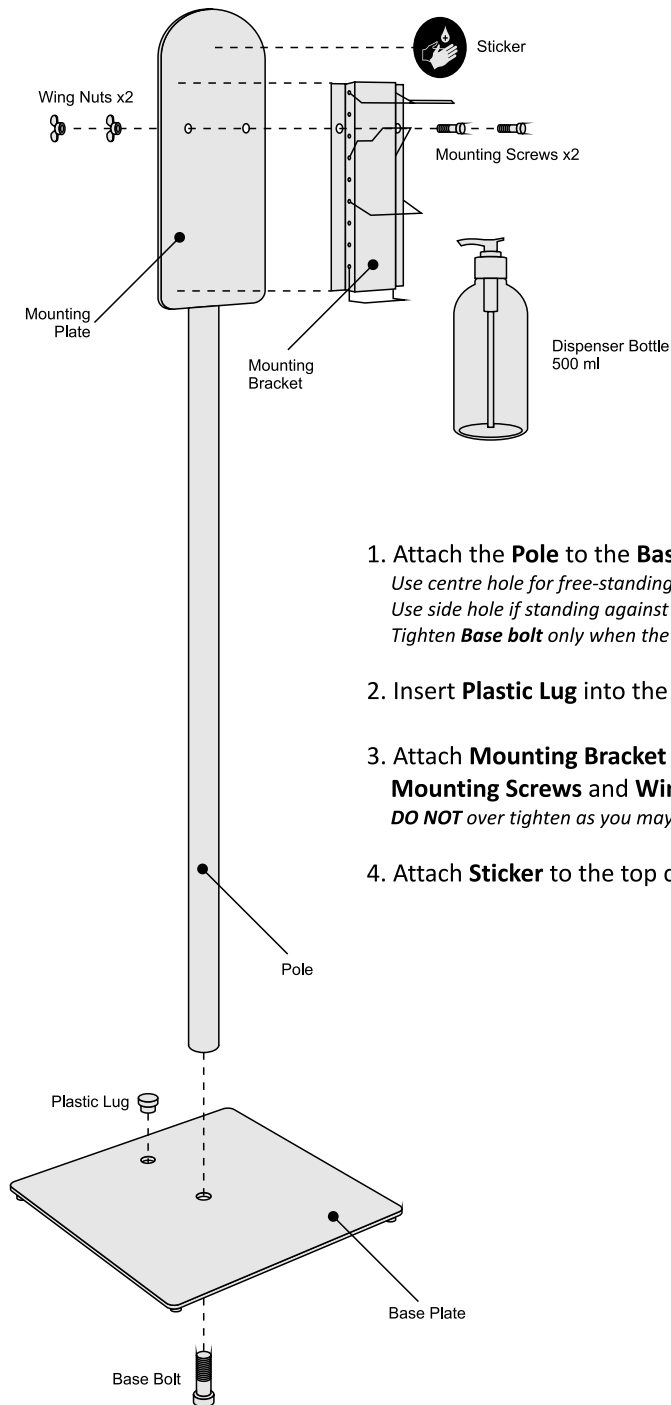


Dispenser Stand

Assembly Instructions



1. Attach the **Pole** to the **Base Plate** using the **Base Bolt**.
*Use centre hole for free-standing position.
Use side hole if standing against a wall.
Tighten **Base bolt** only when the **Mounting Plate** is facing forwards.*
2. Insert **Plastic Lug** into the empty hole in the **Base Plate**.
3. Attach **Mounting Bracket** to **Mounting Plate** using x2 **Mounting Screws** and **Wing Nuts**.
***DO NOT** over tighten as you may damage the plastic **Mounting Plate**.*
4. Attach **Sticker** to the top centre of the **Mounting Plate**.